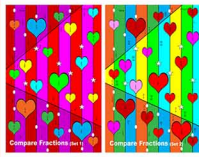


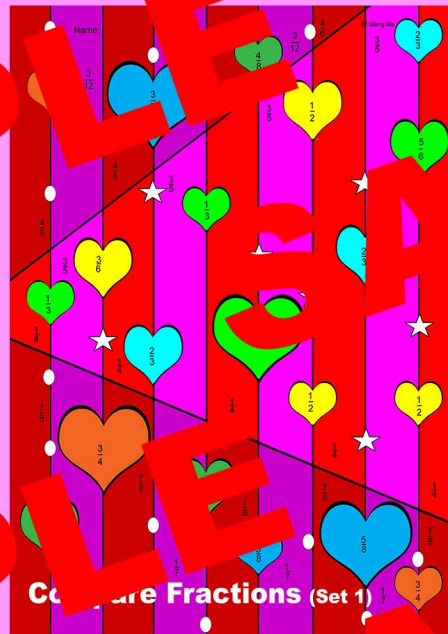
Valentine Color by Code: Compare Fractions

This Valentine theme package includes 2 sets of worksheets. Set 1 includes a student's version and a teacher's version. The problems in each set. Use for Valentine's Day or any time. Prep Free! Differentiated!

Color by Code Compare Fractions



Learning Math through
Fun Activities

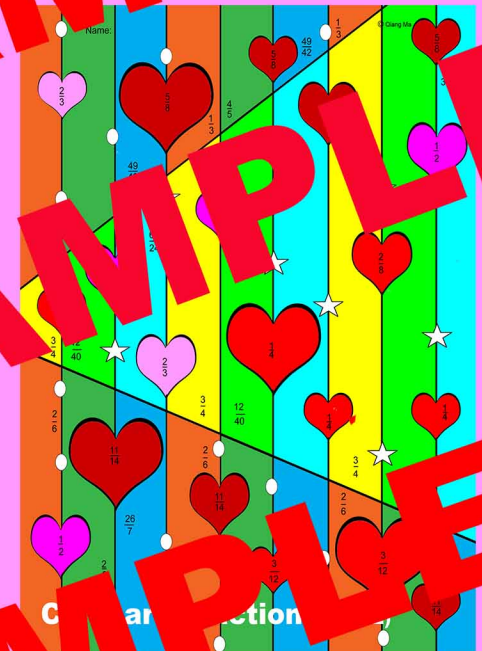


Color by Code: Compare Fractions (Set 1)

Directions: Solve each problem. Then find the answer on the color key. Color it according to the color given in the box.

1. Which fraction is smaller? $\frac{2}{3}$ OR $\frac{3}{6}$ Color: Yellow	2. Which fraction is smaller? $\frac{3}{4}$ OR $\frac{4}{6}$ Color: Dark Red	3. Which fraction is smaller? $\frac{3}{5}$ OR $\frac{3}{4}$ Color: Magenta	4. Which fraction is smaller? $\frac{5}{8}$ OR $\frac{1}{2}$ Color: Yellow
5. Which fraction is smaller? $\frac{1}{3}$ OR $\frac{1}{4}$ Color: Red	6. Which fraction is smaller? $\frac{5}{6}$ OR $\frac{4}{6}$ Color: Dark Red	7. Which fraction is smaller? $\frac{3}{4}$ OR $\frac{3}{5}$ Color: Magenta	8. Which fraction is smaller? $\frac{3}{4}$ OR $\frac{2}{5}$ Color: Yellow
9. Which fraction is greater? $\frac{3}{4}$ OR $\frac{1}{4}$ Color: Orange	10. Which fraction is greater? $\frac{5}{6}$ OR $\frac{7}{6}$ Color: Dark Red	11. Which fraction is greater? $\frac{3}{4}$ OR $\frac{3}{5}$ Color: Magenta	12. Which fraction is greater? $\frac{3}{4}$ OR $\frac{2}{5}$ Color: Yellow
13. Which fraction is smaller? $\frac{2}{3}$ OR $\frac{3}{6}$ Color: Purple	14. Which fraction is smaller? $\frac{1}{3}$ OR $\frac{1}{4}$ Color: Yellow	15. Which fraction is greater? $\frac{4}{8}$ OR $\frac{5}{8}$ Color: Red	16. Which fraction is greater? $\frac{1}{3}$ OR $\frac{1}{4}$ Color: Light Green

1. Which fraction is smaller? $\frac{2}{3}$ OR $\frac{3}{6}$ Color: Yellow	2. Which fraction is smaller? $\frac{3}{4}$ OR $\frac{4}{6}$ Color: Dark Red	3. Which fraction is smaller? $\frac{3}{5}$ OR $\frac{3}{4}$ Color: Magenta	4. Which fraction is smaller? $\frac{5}{8}$ OR $\frac{1}{2}$ Color: Yellow
5. Which fraction is smaller? $\frac{1}{3}$ OR $\frac{1}{4}$ Color: Red	6. Which fraction is smaller? $\frac{5}{6}$ OR $\frac{4}{6}$ Color: Dark Red	7. Which fraction is smaller? $\frac{3}{4}$ OR $\frac{3}{5}$ Color: Magenta	8. Which fraction is smaller? $\frac{3}{4}$ OR $\frac{2}{5}$ Color: Yellow
9. Which fraction is greater? $\frac{3}{4}$ OR $\frac{1}{4}$ Color: Orange	10. Which fraction is greater? $\frac{5}{6}$ OR $\frac{7}{6}$ Color: Dark Red	11. Which fraction is greater? $\frac{3}{4}$ OR $\frac{3}{5}$ Color: Magenta	12. Which fraction is greater? $\frac{3}{4}$ OR $\frac{2}{5}$ Color: Yellow
13. Which fraction is greater? $\frac{2}{3}$ OR $\frac{3}{6}$ Color: Purple	14. Which fraction is greater? $\frac{1}{3}$ OR $\frac{1}{4}$ Color: Yellow	15. Which fraction is greater? $\frac{4}{8}$ OR $\frac{5}{8}$ Color: Red	16. Which fraction is greater? $\frac{1}{3}$ OR $\frac{1}{4}$ Color: Light Green



1. Which fraction is smaller? $\frac{3}{12}$ OR $\frac{5}{8}$ Color: Red	2. Which fraction is smaller? $\frac{5}{6}$ OR $\frac{3}{4}$ Color: Yellow	3. Which fraction is smaller? $\frac{5}{6}$ OR $\frac{5}{8}$ Color: Dark Red	4. Which fraction is smaller? $\frac{12}{40}$ OR $\frac{6}{10}$ Color: Light Green
5. Which fraction is greater? $\frac{2}{8}$ OR $\frac{7}{32}$ Color: Red	6. Which fraction is greater? $\frac{3}{15}$ OR $\frac{1}{3}$ Color: Orange	7. Which fraction is greater? $\frac{3}{7}$ OR $\frac{11}{14}$ Color: Dark Red	8. Which fraction is greater? $\frac{4}{5}$ OR $\frac{2}{4}$ Color: Dark Green
9. Which fraction is the smallest? $\frac{5}{12}$ OR $\frac{5}{4}$ OR $\frac{1}{12}$ Color: Magenta	10. Which fraction is the smallest? $\frac{5}{12}$ OR $\frac{5}{4}$ OR $\frac{1}{12}$ Color: Magenta	11. Which fraction is the smallest? $\frac{2}{9}$ OR $\frac{1}{3}$ OR $\frac{2}{6}$ Color: Orange	12. Which fraction is the smallest? $\frac{2}{9}$ OR $\frac{1}{3}$ OR $\frac{2}{6}$ Color: Dark Green
13. Which fraction is the greatest? $\frac{2}{3}$ OR $\frac{3}{15}$ Color: Pink	14. Which fraction is the greatest? $\frac{2}{3}$ OR $\frac{3}{15}$ Color: Pink	15. Which fraction is the greatest? $\frac{2}{3}$ OR $\frac{3}{15}$ Color: Yellow	16. Which fraction is the greatest? $\frac{1}{12}$ OR $\frac{1}{8}$ Color: Magenta
17. Which fraction is the smallest? $\frac{5}{8}$ OR $\frac{17}{4}$ OR $\frac{1}{12}$ Color: Light Blue	18. Which fraction is the smallest? $\frac{3}{18}$ OR $\frac{65}{24}$ OR $\frac{3}{12}$ Color: Light Blue	19. Which fraction is the smallest? $\frac{40}{18}$ OR $\frac{35}{12}$ OR $\frac{3}{4}$ Color: Dark Blue	20. Which fraction is the smallest? $\frac{2}{15}$ OR $\frac{35}{12}$ OR $\frac{3}{4}$ Color: Dark Blue

1. Which fraction is smaller? $\frac{3}{12}$ OR $\frac{5}{8}$ Color: Red	2. Which fraction is smaller? $\frac{5}{6}$ OR $\frac{3}{4}$ Color: Yellow	3. Which fraction is smaller? $\frac{5}{6}$ OR $\frac{5}{8}$ Color: Dark Red	4. Which fraction is smaller? $\frac{12}{40}$ OR $\frac{6}{10}$ Color: Light Green
5. Which fraction is greater? $\frac{2}{8}$ OR $\frac{7}{32}$ Color: Red	6. Which fraction is greater? $\frac{3}{15}$ OR $\frac{1}{3}$ Color: Orange	7. Which fraction is greater? $\frac{3}{7}$ OR $\frac{11}{14}$ Color: Dark Red	8. Which fraction is greater? $\frac{4}{5}$ OR $\frac{2}{4}$ Color: Dark Green
9. Which fraction is the smallest? $\frac{5}{12}$ OR $\frac{5}{4}$ OR $\frac{1}{12}$ Color: Red	10. Which fraction is the smallest? $\frac{5}{12}$ OR $\frac{5}{4}$ OR $\frac{1}{12}$ Color: Red	11. Which fraction is the smallest? $\frac{2}{9}$ OR $\frac{1}{3}$ OR $\frac{2}{6}$ Color: Orange	12. Which fraction is the smallest? $\frac{2}{9}$ OR $\frac{1}{3}$ OR $\frac{2}{6}$ Color: Dark Green
13. Which fraction is the greatest? $\frac{2}{3}$ OR $\frac{3}{15}$ Color: Pink	14. Which fraction is the greatest? $\frac{2}{3}$ OR $\frac{3}{15}$ Color: Pink	15. Which fraction is the greatest? $\frac{2}{3}$ OR $\frac{3}{15}$ Color: Yellow	16. Which fraction is the greatest? $\frac{1}{12}$ OR $\frac{1}{8}$ Color: Magenta
17. Which fraction is the smallest? $\frac{5}{8}$ OR $\frac{17}{4}$ OR $\frac{1}{12}$ Color: Light Blue	18. Which fraction is the smallest? $\frac{3}{18}$ OR $\frac{65}{24}$ OR $\frac{3}{12}$ Color: Light Blue	19. Which fraction is the smallest? $\frac{40}{18}$ OR $\frac{35}{12}$ OR $\frac{3}{4}$ Color: Dark Blue	20. Which fraction is the smallest? $\frac{2}{15}$ OR $\frac{35}{12}$ OR $\frac{3}{4}$ Color: Dark Blue

Term of Use

Copyright © Qiang Ma

All rights reserved by the author.

Credits

I draw all the clipart myself for all the products in my store.

Thank you so much and I hope you enjoy this lesson.

